

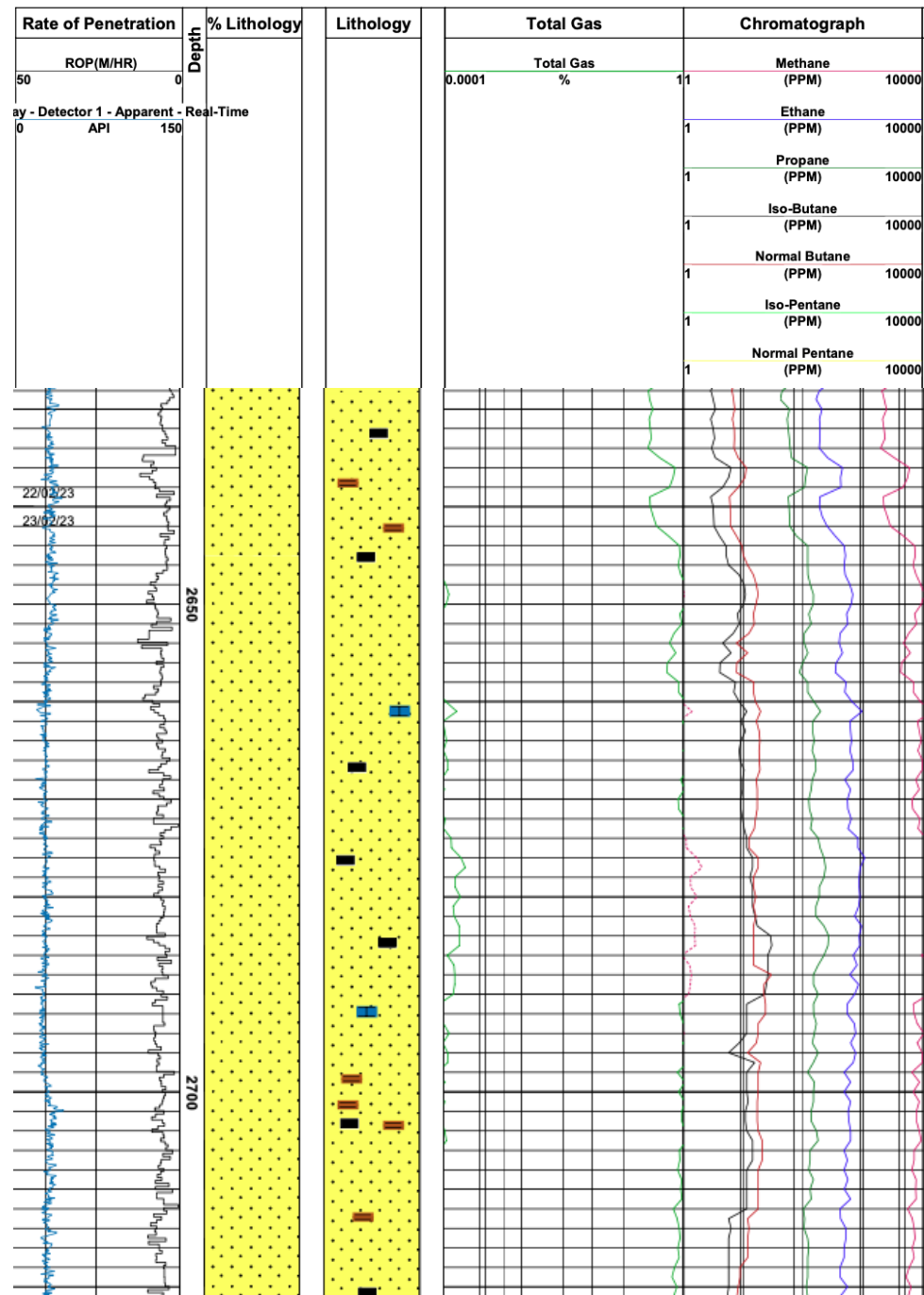
SF1u – Originally the best producer of the field. Well was abandoned as previous operator could not kill the well (due to high gas flow rates), in order to perform a workover. GR log is plotted on well trajectory.

SF7u –The productive section of the sidetrack is in the same layer as SF1u. The max distance between the two horizontal drains is 20m. GR log is plotted on well trajectory.

SF1u productive section

SF7u productive section

Westphalian Reservoir
Base of Unit 1c



SF7u – Part of the mud log (live measurements from drilling ops) showing massive increase in Total Gas % and Methane Concentration exceeding 10,000 ppm in reservoir